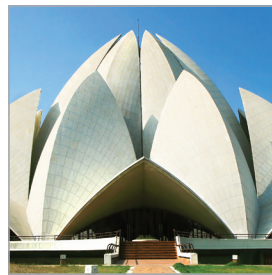


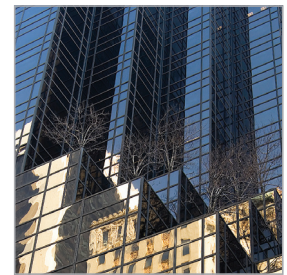
Silicone Sealants



Structural Glazing



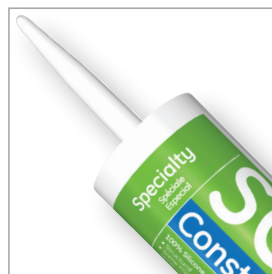
Weatherseal



Insulating Glass



Glazing



Specialty



Coatings



imagination at work

Pioneered by GE. Refined by GE.

With a history of dedication to innovation and excellence, today's family of GE-branded sealant products address a wide variety of the ever-inventive, increasingly demanding architecture found around the world. Outstanding durability, flexibility, and movement capability are fundamental to the high performance of GE-branded sealants. With decades of experience, in new and remedial applications, on some of the world's most innovative structures, the sealants team provides knowledge and comprehensive support to help ensure a successful project.

This steadfast commitment to silicone innovation is delivered by a wide variety of product offerings, organized into five product families:

- Structural glazing
- Weathersealing
- Glazing
- Multi-Purpose
- Specialty

Product Portfolio

Family	Grade
Multi-Purpose	1000A Silicone Sealant 1200GC Silicone Sealant SilPlus* AS Silicone Sealant
Specialty	1200 Constuction Silicone Sealant SCS5800 SilPlus X Silicone Sealant Contractors Sanitary Silicone Sealant Tradesil* A HVAC Silicone Sealant HH1800 High Heat Silicone Sealant Pensil* 300 Fire Stop Sealant Reflexsil* Mirror Bonding Silicone Sealant
Weathersealing	SCS2000E SilPruf* E Silicone Sealant SCS9100 SilPruf F Silicone Sealant SCS9000 SilPruf NB Silicone Sealant
Glazing and Structural Glazing	SCS5500 Multisil* Silicone Sealant SCS2500E SilGlaze* N Silicone Sealant SCS2600 SilGlaze W&D Silicone Sealant SSSG4000E UltraGlaze* Silicone Sealant



Application Selection Guide

Products	Acetoxy							Neutral									
	1000A Silicone Sealant	1200GC Silicone Sealant	SilPlus* AS Silicone Sealant	Tradesil* A HVAC Silicone Sealant	Contractors Sanitary Silicone Sealant	1200 Constuction Silicone Sealant	HH 1800 High Heat Silicone Sealant	SCS5800 SilPlus X Silicone Sealant	SCS5500 Multisil* Silicone Sealant	SCS2500E SilGlaze* N Silicone Sealant	SCS2600E SilGlaze W&D Silicone Sealant	SCS2000E SilPruf* E Silicone Sealant	SCS9000 SilPruf NB Silicone Sealant	SCS9100 SilPruf F Silicone Sealant	Pensil* 300 Fire Stop Sealant	Reflexsil* Mirror Bonding Sealant	SSSG4000E UltraGlaze* Silicone Sealant
Application	Multi-Purpose	Multi-Purpose	Multi-Purpose	Specialty	Specialty	Specialty	Specialty	Specialty	Glazing	Glazing	Glazing	Weathersealing	Weathersealing	Weathersealing	Specialty	Specialty	Structural Glazing
Glass Glazing	***	***	***	***	***	***	***	***	***	***	***	***	***	***	***	***	***
Polycarbonate	-	-	-	-	-	-	-	-	***	-	***	***	***	***	***	***	***
Perimeter Joints	*	*	*	*	***	*	***	***	***	***	***	***	***	***	***	***	***
Expansion Joints	-	-	-	-	***	-	-	-	***	***	***	***	***	***	***	-	-
Precast Concrete	-	-	-	-	-	-	-	***	***	***	***	***	***	***	***	***	***
Curtain Walls	*	*	*	*	*	*	***	-	***	***	***	***	***	***	***	***	***
Cladding Panels	-	-	-	-	***	***	-	-	***	***	***	***	***	***	***	***	***
Roofing	-	-	-	-	*	-	-	-	***	***	***	***	***	***	***	***	***
Mirror Fixing	-	-	-	-	-	-	-	-	-	-	-	-	-	-	***	***	
Kitchen and Bath	-	-	***	***	***	-	-	-	-	-	-	-	-	-	-	-	-
Aquarium	-	-	-	-	-	***	-	-	-	-	-	-	-	-	-	-	-
Ducting	*	*	*	*	*	*	-	-	***	***	***	***	***	***	***	***	-
Draught Proofing	-	-	-	-	***	-	-	-	***	***	***	*	*	*	-	-	-
Pipe and Cable Entries	-	-	-	-	-	-	-	-	***	***	***	***	***	***	***	***	***
Sign Assembly	-	-	-	-	*	*	-	***	***	***	***	***	***	***	*	-	-
Fire Stop	-	-	-	-	-	-	-	-	-	-	-	-	-	-	***	-	-
High Temperature	-	-	-	-	-	-	***	-	-	-	-	-	-	-	-	-	-
FDA Approval	-	-	-	-	-	***	-	-	-	-	-	-	-	-	-	-	-

- Not suitable *** Recommended * Limited recommendation

Substrate Adhesion Chart

Products	Acetoxy							Neutral									
	1000 A Silicone Sealant	1200GC Silicone Sealant	SilPlus* AS Silicone Sealant	Tradesil* A HVAC Silicone Sealant	Contractors Sanitary Silicone Sealant	1200 Construction Silicone Sealant	HH 1800 High Heat Silicone Sealant	SCS5800 SilPlus X Silicone Sealant	SCS5500 Multisil* Silicone Sealant	SCS2500E SilGlaze* N Silicone Sealant	SCS2600E SilGlaze W&D Silicone Sealant	SCS2000E SilPruf* E Silicone Sealant	SCS9000 SilPruf NB Silicone Sealant	SCS9100 SilPruf F Silicone Sealant	Pensil* 300 Fire Stop Sealant	Reflexsil* Mirror Bonding Sealant	SSG4000E UltraGlaze* Silicone Sealant
Concrete Masonry																	
Concrete General	-	-	-	-	-	-	-	***	***	***	***	***	***	***	***	***	***
Plaster	-	-	-	-	-	-	-	*	***	***	***	***	***	***	***	***	***
Limestone	-	-	-	-	-	-	-	***	***	***	***	***	***	***	***	***	***
Marble	-	-	-	-	-	-	-	*	*	*	*	*	***	*	*	*	*
Granite	-	-	-	-	-	-	-	*	*	***	***	***	***	***	***	***	***
Brick	-	-	-	-	-	-	-	***	***	***	***	***	***	***	***	***	***
Floor Tile	-	-	-	-	-	-	-	***	***	***	***	***	***	***	***	***	***
Glass/Glazed Surfaces																	
Glass, Float	***	***	***	***	***	***	***	***	***	***	***	***	***	***	***	***	***
Glass, Tinted	***	***	***	***	***	***	***	***	***	***	***	***	***	***	***	***	***
Glass, Coated	*	*	*	*	*	*	*	*	*	*	***	***	***	***	***	***	***
Glass, Laminated	*	*	*	*	*	*	*	*	*	*	*	*	***	*	*	*	*
Metals																	
Aluminum, Mill Finished	*	*	*	*	*	*	*	***	***	***	***	***	***	***	***	***	***
Aluminum, Anodised	***	***	***	***	***	***	***	***	***	***	***	***	***	***	***	***	***
Stainless Steel	*	*	*	*	*	*	*	***	***	***	***	***	***	***	***	***	***
Galvanised Steel	-	-	-	-	-	-	-	*	*	***	***	***	***	***	***	***	***
Mild Steel	-	-	-	-	-	-	-	*	***	*	***	***	***	***	***	***	***
Copper	-	-	-	-	-	-	-	*	***	***	***	***	***	***	***	***	***
Brass	-	-	-	-	-	-	-	*	***	***	***	***	***	***	***	***	***
Lead	-	-	-	-	-	-	-	*	*	*	*	*	*	*	*	*	*
Painted, Coated Metals	*	*	*	*	*	*	*	*	*	*	*	*	*	*	*	*	*
Enamel Coated Steel	*	*	*	*	***	***	***	*	*	***	*	*	*	*	*	*	*
Wood																	
Non Treated	-	-	-	-	-	-	-	-	-	-	-	-	-	-	-	-	-
Painted/Coated/ Impregnated	*	*	*	*	*	*	*	*	*	***	*	*	*	*	*	*	*
Plastic Sheet																	
Lexan 9030	-	-	-	-	-	-	-	*	***	-	***	***	***	***	***	***	***
Lexan ST 5000	-	-	-	-	-	-	-	*	***	-	***	***	***	***	***	***	***
Lexan Margard	***	***	***	***	***	***	***	***	***	***	***	***	***	***	***	***	***
Lexan Exell D	-	-	-	-	-	-	-	*	***	-	***	***	***	***	***	***	***
Lexan Thermoclear (UV Side)	-	-	-	-	-	-	-	*	***	-	***	***	***	***	***	***	***
Lexan Thermoclear (PC Side)	-	-	-	-	-	-	-	*	***	-	***	***	***	***	***	***	***
PC General	-	-	-	-	-	-	-	*	***	-	***	***	***	***	***	***	***
Noryl PX 507	-	-	-	-	-	-	-	***	***	***	***	***	***	***	***	***	***
PMMA Casted	-	-	-	-	-	-	-	*	*	*	***	***	***	***	***	-	-
PMMA Extruded	-	-	-	-	-	-	-	*	*	*	***	***	***	***	***	-	-
PVC Hard	-	-	-	-	-	-	-	***	***	***	***	***	***	***	***	***	***
PVC Hard Foam	-	-	-	-	-	-	-	***	***	***	***	***	***	***	***	***	***
PVC Plasticised	-	-	-	-	-	-	-	*	*	*	*	*	*	*	*	*	*
Polyester	-	-	-	-	-	-	-	***	***	*	***	***	***	***	***	***	***
Glass Reinforced Polyester	-	-	-	-	-	-	-	***	***	***	***	***	***	***	***	***	***
PET	***	***	***	***	***	*	*	***	***	***	***	***	***	***	***	***	***
PETG	***	***	***	***	***	*	*	***	***	***	***	***	***	***	***	***	***
PS	*	*	*	*	***	***	***	***	***	-	***	***	***	***	***	***	***
ABS	-	-	-	-	-	-	-	***	***	*	***	***	***	***	***	***	***
Teflon	-	-	-	-	-	-	-	-	-	-	-	-	-	-	-	-	-
Polyethylene	-	-	-	-	-	-	-	-	-	-	-	-	-	-	-	-	-

- Not suitable *** Recommended * Limited recommendation

Technical Support

From a project's inception to completion, the sealants team offers superior technical assistance. With decades of experience on some of the world's most innovative and picturesque structures, the team provides a wealth of knowledge and support to help deliver results.

A summary of the technical assistance provided by the team is below. Technical support is available throughout the process.

- 1. Project Review – Reviews project details to assist with proper product selection based on usage criteria, specifications and customer needs.
- 2. Drawing Review – Reviews all drawings and details to help identify the required contact width and configuration of the structural silicone based on project performance requirements and installation considerations.
- 3. Lab Testing – Tests all substrates to be used in the project that the sealant is to bond to, or will come in contact with, in the factory or on the jobsite.
- 4. Project Report – Provides written test results that detail recommendations for product selection and substrate preparation.
- 5. Quality Control – Develops easy-to-follow QC testing (including adhesion testing) and documentation procedures to help ensure consistent performance from inception to completion.
- 6. Project Warranty – Once steps 1-5 are satisfactorily completed, offers extended warranties for long-term assurance.

Primer Selection

GE-branded construction sealant primers help promote strong and consistent adhesion of sealants to surfaces that may be difficult to bond to. These primers are supplied ready-to-use (i.e., no mixing required) as an easily pourable solution and are intended for application to clean, dry, frost-free, sound surfaces just prior to sealant installation.

- SS 4179 silicone primer⁽¹⁾ is recommended for porous substrates, plastics, wood and coated/painted metals. Color of the primer is clear to straw.
- SS4155 silicone primer⁽¹⁾ with a blue color or SS4004P silicone primer⁽¹⁾ with an orange-pink color are recommended for bare metals only.

⁽¹⁾Actual drying time at 20 °C is 15 to 30 minutes. Drying time depends on wind, humidity, temperature and film thickness. High humidity, low temperatures and heavy films extend drying time. Primers are available in 500 ml glass bottles, 12 per box.

Cleaning Procedure

Surface must be clean, dry and free from oil, grease, dust and other loose components. Surface abrading, brushing or sandblasting may be required. Since surfaces vary from job to job, it is recommended to evaluate test applications with respect to cleaning and primer preparation. Always contact the substrate supplier to verify which cleaning agent should be used for the typical materials with respect to compatibility and surface treatment.

Recommended Cleaning Agent

Substrate	Cleaning Agent
Concrete/Masonry	Surface must be clean, dry and free from oil, grease, dust and other loose components.
Glazed surfaces	I.P.A. or M.E.K. Solvent used should be checked for compatibility with adjacent materials.
Metals	I.P.A., M.E.K., or other suitable solvents. Wire brush rusty steel surfaces/sand off oxide from copper and lead. Remove excess solvent with a dry cloth. Painted/coated metals should be cleaned according to paint and coating suppliers recommendations.
Wood	Typically treat with a cleaning solvent (I.P.A.), preservative agent or protective paint to ensure sealant adhesion.
Plastic Sheet	Always contact supplier for surface cleaning procedure. In general, alcohol or naphtha can be used for surface cleaning.

General Application Instructions

The use of masking tape is recommended, where appropriate, to ensure a neat appearance. Cut nozzle at an angle and apply using a hand, electrical or air operated cartridge gun. Tool product using a round-edged spatula to spread the sealant against the back-up materials and joint surfaces. Remove masking tape immediately after tooling. Primers should be applied to clean, dry, frost-free, sound surfaces that are free of contaminants, just prior to sealant installation. Primers are not intended to replace the recommended cleaning steps. Apply primer to porous surfaces with a natural bristle or lint-free cloth in a thin, continuous film. Only apply primer to the surfaces being treated. Avoid application of primer outside of the area to be sealed, especially on porous surfaces where darkening of the surface by primer may be undesirable. Avoid contamination of primer by other materials.

Estimated Sealant Requirement (Linear metres per 310 ml cartridge)

Depth	Width									
	mm	3	4	6	8	10	12	15	20	25
4	25	18	13	10	7	6	5	3.5	-	-
5	20	15	10	7	6	5	4	3	-	-
6	17	13	8	6	5	4	3.3	2.3	-	-
8	13	10	6	5	4	3	2.5	1.8	-	-
10	10	8	5	4	3	2	2	1.5	1.3	-



For more information about GE-branded Construction Sealants or to see a detailed description of GE-branded sealants and adhesives available in Europe/Middle East/Africa/India, visit www.ge.com/silicones.

A GE Construction Sealants product catalog is available by request from your sales representative. For global product availability, contact customer service.

Customer Service: 00 800 4321 1000 | Technical Services: Europe & Africa: +31 164 292 600, Middle East: +971 886 2070, India: +91 44 304 120 77

ANY SALE OF PRODUCTS OR DELIVERY OF CUSTOMER SUPPORT AND ADVICE BY MOMENTIVE PERFORMANCE MATERIALS INC. AND/OR ITS AFFILIATES ("MOMENTIVE") IS MADE EXCLUSIVELY UNDER MOMENTIVE'S STANDARD CONDITIONS OF SALE which are included in the applicable sales agreements, printed on the back of acknowledgments and invoices, or available upon request. **MOMENTIVE MAKES NO WARRANTY, EXPRESS OR IMPLIED, WITH RESPECT TO THE PERFORMANCE, SUITABILITY OR FITNESS FOR INTENDED USE OF ITS PRODUCTS IN ANY CUSTOMER'S APPLICATION.** Each customer should determine the suitability of Momentive's materials for the customer's particular use through appropriate testing and analysis.